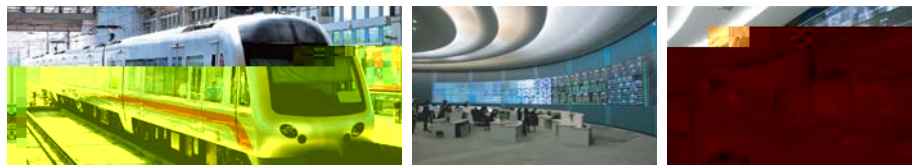




14 300

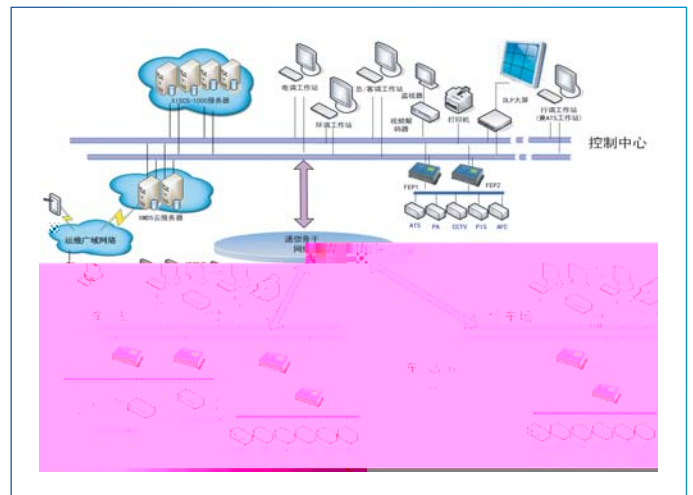


上海新华控制技术集团科技有限公司

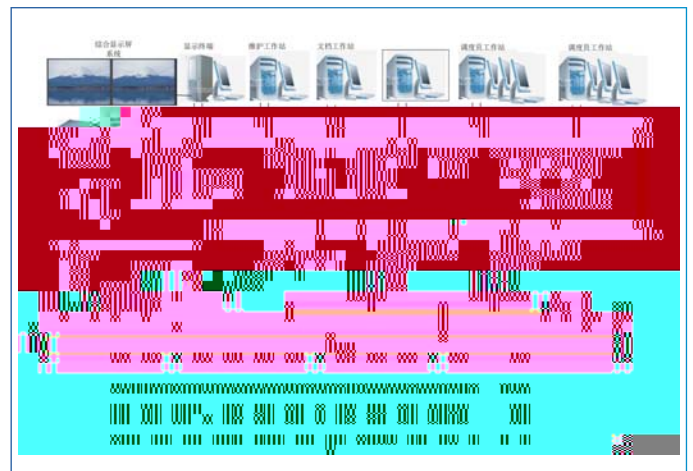
| 021-34292618 |

# XISCS-1000

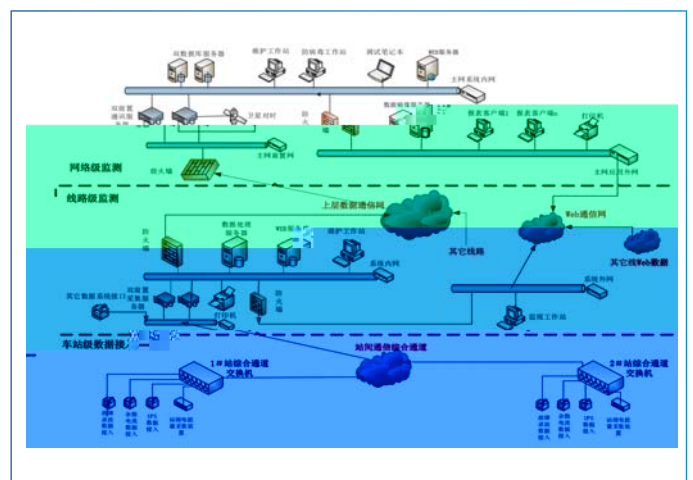
- 
- 
- 1000
- 
- 
- 



# XISCS-PSCADA



# XISCS-PQSS

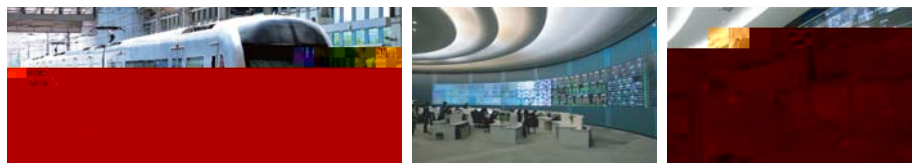


➤	14	➤	2	➤	2
➤	5	➤	2	➤	S1



# XINHUA Technology Rail Transport Solution

This integrated solution is used for comprehensive supervision, power supervision and electric energy supervision of rail transport industry , which integrates the“ station-line-network” automatic and intelligent system equipment ; realizes the information sharing and linkage; meets the management demands of rail transport for efficient operation.



Please consulting Tel.:

021-34292618

Please visit website:

